

Steering gear, steering columns, angle sensors



POINTS TO NOTE

Properly packed
Not dirty
Not rusted
Not damaged
Complete assembly only
Not disassembled
Not modified
Not a third-party part
Drained
Use protective caps/seal plugs
-
No damage to body
-
No faulty connectors
-
Part number legible



The protective caps removed from the new part must be applied to the used part for return. Seal all open holes!

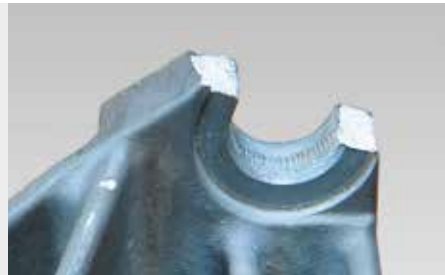


Take special care during installation/removal to prevent damage to the connectors!

Examples of returns exclusion criteria



Track rods not removed. To ensure safe transport, the track rods must first be removed.



Damage caused by external use of force. A piece of the metal eye from the steering gear has broken off.



Faulty connector. The connector has snapped off.



Missing protective cap. This can result in external parts, such as the spline drive, being damaged during transport.



Body damaged by external use of force, with possible resultant damage to the electronics.

Special point to note with steering gear: We also accept steering gear from accident-damaged vehicles, as long as the returns criteria set out here are met. Special care must be taken during removal to ensure that the connector pins are not damaged.

POINTS TO NOTE

Properly packed

Use the package of the Genuine Exchange Part (rack/box for engine/gearbox)

Not dirty

Return the used part cleaned/clean, not covered in oil or grease

Not rusted

No corrosion, e.g. as a result of cleaning with water

Not damaged

No damage resulting from the use of force, transport damage or inappropriate removal (incorrect tools used, etc.)

Complete assembly only

Scope of return to correspond to supply of the Genuine Exchange Part

Not disassembled

The used part must not be disassembled – especially not in the case of electrical components (tamper-proof seal)

Not modified

The used part must not have been technically modified (identical with production, no tuning)

Not a third-party part

Only returns of VW AG Genuine Parts and Economy Parts are acceptable

Drained

Return the used part with all the oil/coolant drained off

Use protective caps/seal plugs

Remove from the Genuine Exchange Part and apply to the used part

Undamaged seal faces

No striations, scratches or flaws

No damage to body

The body must not have been broken/cracked by external influences

No fire damage

No fire damage that has not been caused internally

No faulty connectors

Not cracked or broken off or detached

No opened units

Electronic components must not be opened

Part number legible

It should be possible to unambiguously identify the part number

EQUIVALENT TYPE EXCHANGE WITH PSEUDO-NUMBERS

Parts group	Pseudo-number	Comments
Diesel particulate filters	000 254 701 U	–
Injectors	000 130 201 U	With 1-spring system
	100 130 201 U	With 2-spring system
Drive shaft sets	000 498 099 U	–
Drive shafts	100 407 271 U	Excluding tripod
	200 407 271 U	With tripod
Catalytic converters	000 131 701 U	–
Automatic gearbox clutch	095 323 205 U	No SAC clutches, clutch plates, clutch pressure plates
Air mass meters	000 906 461 U	Exceptions: please return 051 133 471 AX as 051 133 471 AU, 054 133 471 BX as 054 133 471 BU and 037 906 301 CX as 037 906 301 CU
Gear-shift components	000 321 025 U	–
Valve bodies	000 325 039 U	Exceptions: 01J 325 032 MX/PX, 09D 325 039 X/AX/BX/CX/DX/FX/GX/KX, 09G 325 039 X/AX/BX/CX/DX, 09K 325 039 X/AX and 09M 325 039 X/AX please return quoting the relevant U-part number